

Advanced Guitar

(for the worship environment)

Tuning: A440
Notes on the neck

E	F	F#	G	G#	A	A#	B	C	C#	D	D#	E
B	C	C#	D	D#	E	F	F#	G	G#	A	A#	B
G	G#	A	A#	B	C	C#	D	D#	E	F	F#	G
D	D#	E	F	F#	G	G#	A	A#	B	C	C#	D
A	A#	B	C	C#	D	D#	E	F	F#	G	G#	A
E	F	F#	G	G#	A	A#	B	C	C#	D	D#	E

Major Keys

M m m M M m d

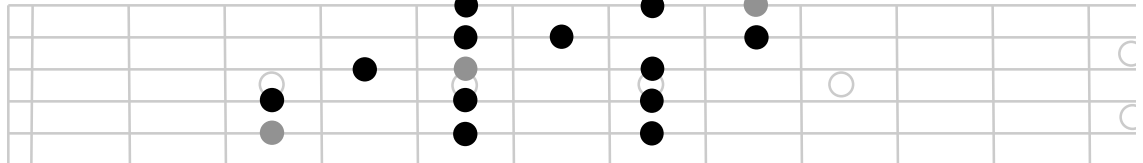
M=Major chord
m=minor chord
d=diminished chord

Steps in Major Scale

W W H W W W H

W=Whole Step (2 frets)
H=Half Step (1 fret)

Major Scale: example in C Major



minor Keys

m d M m m M M

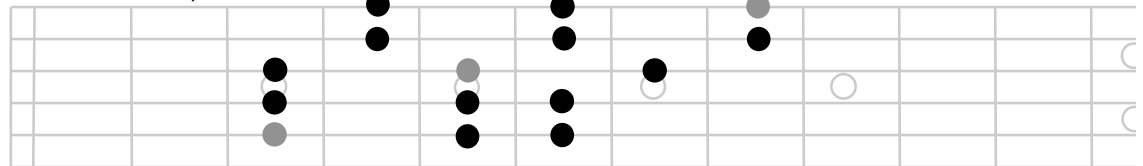
M=Major chord
m=minor chord
d=diminished chord

Steps in minor Scale

W H W W H W W

W=Whole Step (2 frets)
H=Half Step (1 fret)

minor Scale: example in C minor



Chord Construction

M3=Major 3rd
Equivalent to 2 whole steps

m3=minor 3rd
Equivalent to 1 1/2 steps

Major Chord = M3/m3
minor Chord = m3/M3
diminished Chord = m3/m3
augmented Chord = M3/M3

TRIAD HELPS (the basic chord is a triad – three notes)

A	B	C	D	E	F	G
C	D	E	F	G	A	B
E	F	G	A	B	C	D

Every triad (basic chord) will follow this formula – the key may add a sharp or flat to one of the notes. *Ex—a basic C chord will always have some kind of C note, some kind of E note, and some kind of G note.*

Popular CAPO Forms/Positions – with helps for the most used chords in contemporary worship

Forms/Positions	A	Am	B	Bm	C	C#m	D	Dm	E	Em	F	F#m	G
2 nd Fret Good for songs in the key of A, D and E	B	Bm	C#	C#m	D	D#m	E	Em	F#	F#m	G	G#m	A
3 rd Fret Good for songs in the key of F, G and C	C	Cm	D	Dm	D#	Em	F	Fm	G	Gm	Ab	Am	Bb
5 th Fret Good for songs in the key of A, C, D, F and G	D	Dm	E	Em	F	F#m	G	Gm	A	Am	Bb	Bm	C
7 th Fret Good for songs in the key of A, B, D and E	E	Em	F#	F#m	G	G#m	A	Am	B	Bm	C	C#m	D

** SOME ALTERNATE TUNINGS TO TRY **

D A D G A D * E G D G B E * D A D G B E * E B E G# B E * 5 string Capo with Drop 6th String